

# ***505<sup>th</sup> Command & Control Wing***

---

*Gateway to Operational Level Command*

## **Installation Control Center (ICC)**



**Lt Col Calvin J. Romrell  
705 TRS/DOC  
21 June 2006**

**This Briefing is:  
UNCLASSIFIED**

---



# Overview

---

- **Leadership Intent**
- **Challenges**
- **Concept Evolution**
- **ICC Organization**
- **DOTMLPF**
- **Lean Process Engineering**
- **Progress**



# AF Leadership Intent

---



***“...Air Force will open and operate airfields” Gen Jumper, CSAF***

***“...focus on building a deployable integrated Expeditionary Operations Center that can be **deployed for base opening actions** so our motivated troops do not have to build this capability every time they deploy with **ad hoc relationships and piecemeal equipment.**”***

***Gen Keys, COMACC as AF/XO***



# Integrated Installation C2 Challenges



- Expeditionary Base Opening
- Integrated Base Defense
- ICC Standardization
- C2 System Integration
- WFHQ Integration
- Homeland Security
- Training
- Exercising



# ICC Concept Evolution

## Wing Operations Center (WOC)

- Execute today's ATO missions
- Track Commanders
- Flight following
- OPREP reporting
- Disseminate CONs
- Alerts and recalls
- Aircraft maintenance status
- Base operability
- Mobility and Generation
- Emergency Actions and Surety
- Battlestaff

## Expeditionary Operations Center (EOC)

- Execute today's ATO missions
- Plan tomorrow's ATO missions
- Commander's Situation Briefing
- Aircraft maintenance status
- Munitions
- Base Operations and Support
- Incident management
- Medical reporting
- Force protection

## ■ WOC+EOC=Installation Control Center (ICC)

- Scalable, tailorable, across phases and location
- Simplified training, exercising, and provisioning



# Installation Control Center

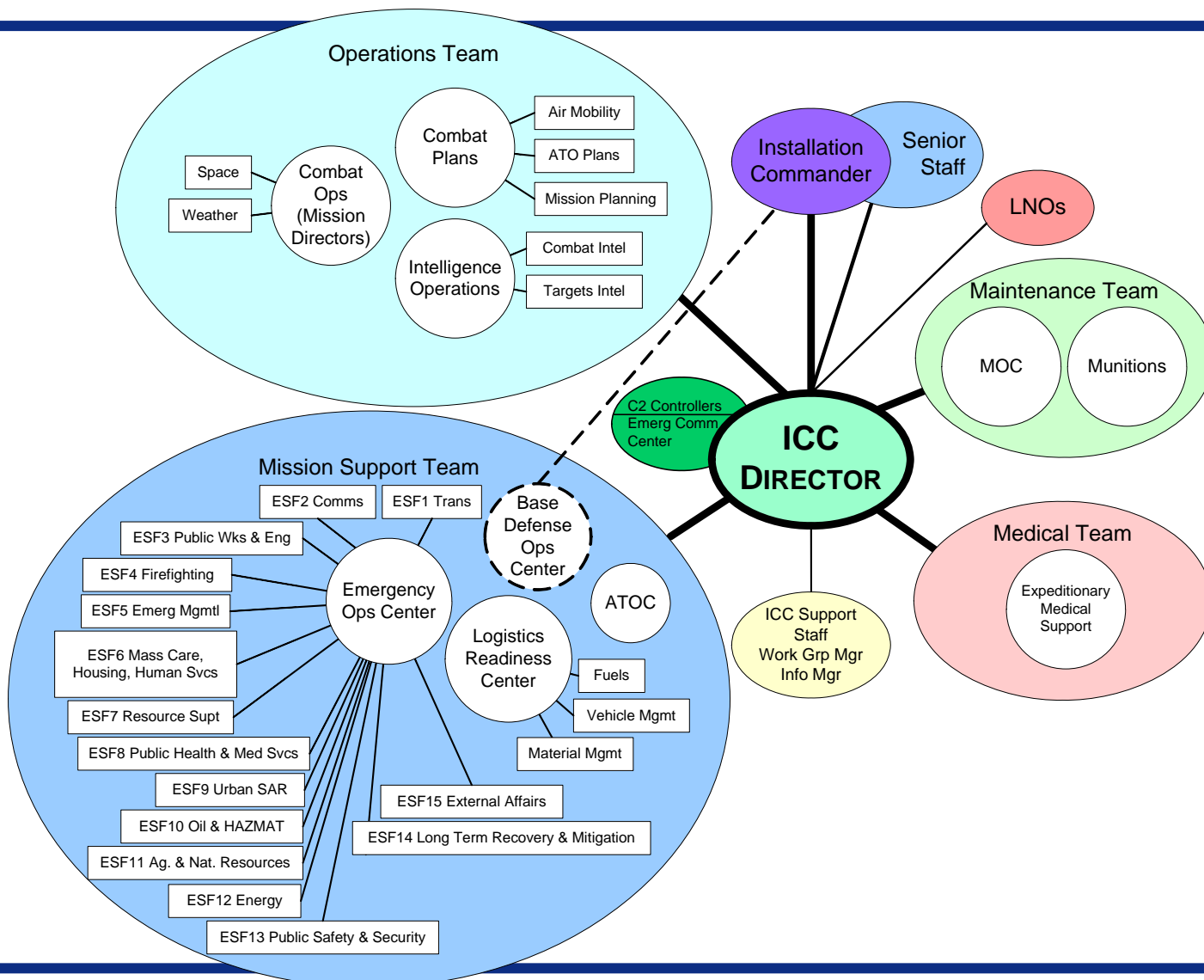
---

- Hub for all Installation C2 functions
- Standardizes Installation C2
- Aligns the Installation C2 node with the commander responsible for Operational Support
- Bridges the C2 gap between operational planning and tactical execution
- Expeditionary C2 environment mirrors fixed installations
  - Reduces the training delta
  - Enables standard system provisioning

**Organization is the key to C2 integration**



# Installation Control Center



***Gateway to Operational Level Command***





# Problem: No Standard Installation C2

---

- Doctrine***
- No AF doctrine established for installation C2
  - AFDD 2-8 refers to wing-level C2 without elaboration
- Organization***
- No standardized AF-wide C2 organization - inefficient
  - Multiple C2 centers on each base
- Training***
- Forces sourced from many bases do not train together
  - C2 training is usually OJT in combat conditions
- Materiel***
- No systems configuration management
  - No Logistics Details established
- Leadership***
- No centralized C2 for span of control and unity of command
- Personnel***
- No manning template for deployed C2
- Facilities***
- No standards for floor space, comms, security, etc.





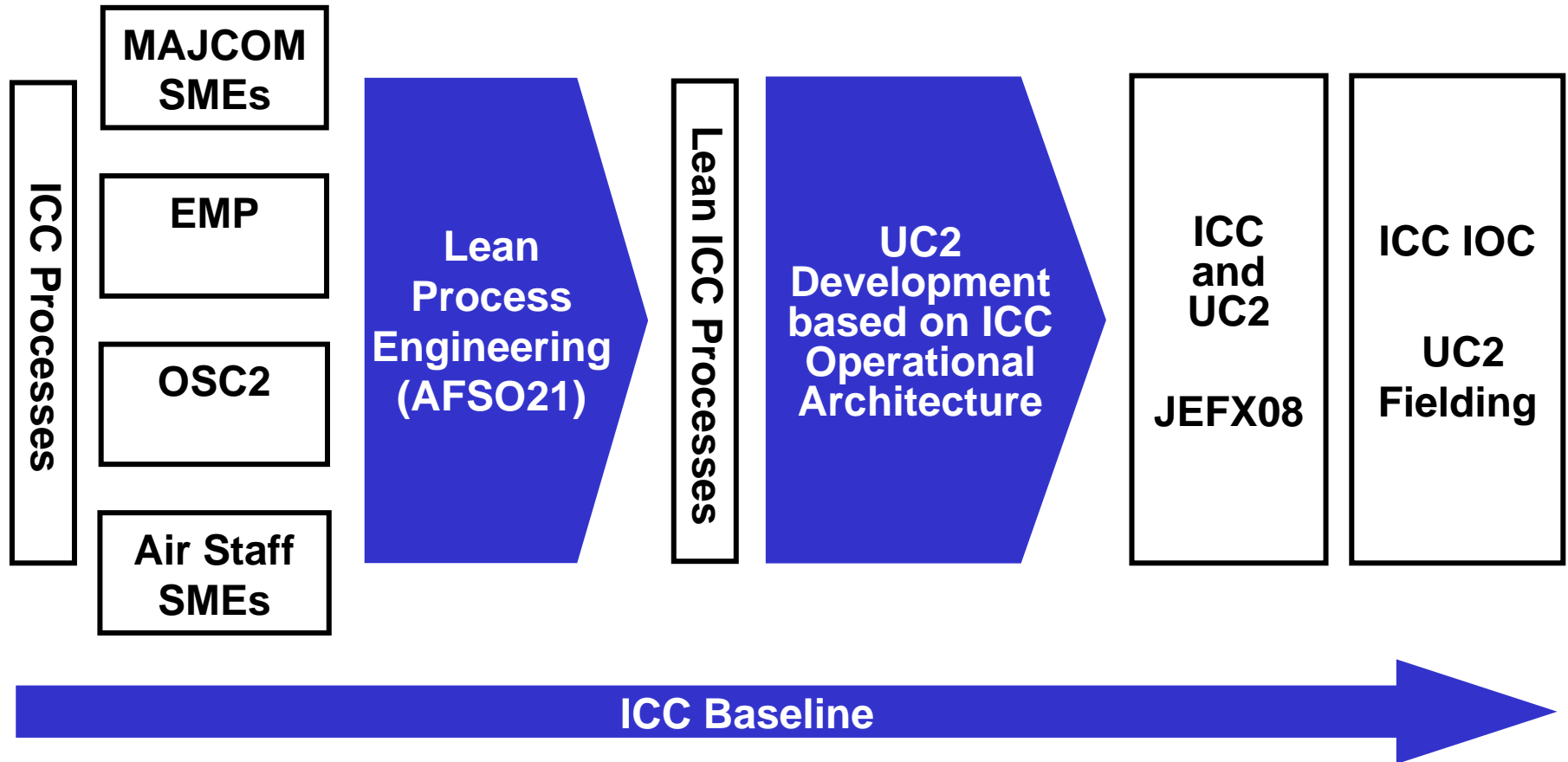
# Lean Process Engineering

---

- **Align ICC with Lean Process Engineering**
  - Upgrade and broaden acceptance of ICC processes
- **Align ICC with development of C2 system standardization – Unit Command and Control (UC2)**
  - ICC/UC2 capability is a JEFX08 focus area
  - UC2 and OSC2 are AFC2ISRC efforts
- **Result: Aligns lean process engineering with operational capability development**
  - Ensures future capability changes will result from process engineering
  - Enables authoritative sources to publish and subscribe
  - Enables self-synchronization



# Process Engineering Alignment



*Gateway to Operational Level Command*



# Progress

---

- **Executing HHQ tasking**
  - **Coordinating ICC Enabling Concept**
  - **Outlining Training and IG Criteria for AF**
  - **Incorporating ICC concept into documentation**
    - **AF Doctrine**
    - **AF Instructions**
    - **AF Tactics, Techniques, and Procedures**
  - **Standardizing ICC throughout the USAF**

