

On Organizational Adaptation via Dynamic Process Selection

Holly A. H. Handley and Alexander H. Levis*

System Architectures Laboratory

C3I Center, MSN 4D2

George Mason University

Fairfax, VA 22030

Abstract

Three different strategies are identified for organizational adaptation, including dynamic process selection. An executable organizational model composed of individual models of a five stage interacting decision maker is used to evaluate the effectiveness of the different adaptation strategies on organizational performance. The concept of entropy is used to calculate the total activity value, a surrogate for decision maker workload, based on the functional partition and the adaptation strategy being implemented. The individual decision maker's total activity is monitored, as overloaded decision makers constrain organizational performance. A virtual experiment was conducted; organizations implementing local and global adaptation strategies were compared to a control organization with no adaptation. The level of tolerance of the organization, the workload limit based on the concept of the bounded rationality constraint, was used to determine when a decision maker was overloaded: the limiting effect of the workload on performance. The timeliness of the organization's response was used in order to evaluate organizational output as a function of adaptation strategy.

1. Introduction

An organization can be considered a system composed of individual decision makers. The organization has a set of tasks that it must do to accomplish its mission. A task is such that it is too complex for a single decision maker to accomplish alone, however the task can be decomposed into functions that can be completed by the individual decision makers. A task graph is developed that represents the information pattern between these functions necessary to complete the task. This task graph is referred to as a process: the series of functions required for each task to produce a response. When changes occur, either within the organization or its environment, to such an extent that the organization is no longer performing adequately or can not perform in its current configuration, the organization is forced to adapt, or reconfigure itself, in response to these changing circumstances, while still continuing to operate.

Three different strategies for organizational adaptation can be identified: none, local, and global. In some cases, no changes in the organizational structure may be the appropriate response to change. Since any type of change imposes an overhead on the organization, for example having more than one decision maker available for a single function, an organization that does not accommodate change can be considered a "low cost" organization; the workload of the individual decision makers is lower than in organizations that can adapt. Alternatively, local

* This research was supported by the Office of Naval Research under Grants no. N00014-93-1-0912, N00014-94-1-0840, and N00014-00-1-0267.

changes within the organizational structure can be made by identifying secondary or backup decision makers allowing tasks or resources to be transferred among the decision makers [Serfaty and Entin, 1995; Perdu and Levis, 1998]. This strategy maintains the process or sequence of functions necessary to complete the task, When the decision maker who has primary responsibility for a function is over loaded, the back up decision maker for that function is selected to decrease the primary decision maker's workload. In order for this method to be effective, there must be alternative decision makers available who are able to complete the same function. This additional information on secondary decision makers is the overhead associated with local adaptation and can be shown to increase a decision maker's workload.

By releasing the constraint on maintaining a fixed process associated with a task, a third adaptation strategy can be implemented by identifying alternative processes capable of completing the same task. This global adaptation represents a change in the organization's strategy for accomplishing a given task [Handley, 1999]. When the organizational output no longer meets the performance requirements of a task, a new process is implemented to complete that type of task. For this method to be effective, there must be alternative task processes identified. This information on alternative process is the overhead associated with global adaptation and can also be shown to increase the decision maker's workload. While the local strategy advocates offsetting individual decision maker's workload while maintaining the same task process, the global strategy implies that selecting a new process will result in improved performance. Carley [1998] discriminates between adaptation at the strategic and at the operational levels.

This paper reviews a model with which to evaluate the performance of an organization under different adaptation strategies, which in turn induce different workload overhead [Handley, 1999]. The decision maker's total activity, as he receives and completes functions, is monitored to determine his workload status. The organizational output is also monitored. An executable model of the organization was created as a Colored Petri net, a discrete event system modeling tool which captures the precedence relations and structural interactions of concurrent and asynchronous events. The prominent component of the organizational model is the decision maker. The five stage interacting decision maker model of Levis [1992] was used as the basis of the decision maker model. Different roles for the five stage decision maker model were identified by noting the allowable input and output patterns required for different functions. These roles were then folded back into one model and implemented as a Colored Petri net, a sub page in the hierarchical organizational model. Stored within the model is an execution table, which returns the output data value for an input data value for a given function; this represents the algorithm implementation of each function. Also included in the model are a process rulebase, which indicates the next function(s) in a specified process, and a next decision maker table, which identifies which decision maker can perform the next function(s). There is also a backup decision maker table that provides secondary decision maker information for overloaded primary decision makers.

The algorithms within each stage of the model can be used to calculate the total activity of the decision maker, a surrogate for the decision maker's workload. Since the adaptation strategy being implemented activates different algorithms in the model, different adaptation strategies result in different total activity values for the decision makers. While a previous study of local

adaptation limited the total number of functions a decision maker could accept in order to avoid overloading [Perdu and Levis, 1998], using total activity as an indicator of cognitive workload provides a better indicator of the decision maker's status based on his functional abilities and the adaptation strategy; it is the cognitive limitation of the decision makers that manifests itself as a bound on the organizational performance. Under different levels of tolerance, the overhead for maintaining the adaptation strategy, as indicated by decision maker workload, may limit organizational performance.

The consequences of the different adaptation strategies were illustrated by conducting a virtual experiment which simulates the organizational model under three different adaptation strategies: none, local, and global. Data from a recent subject experiment was used to populate the model and create input scenarios of tasks for the organizational model to respond to; four task processes and two alternative organizational structures were used. Stress on the organization was induced by increasing the interarrival time of the tasks or the number of arriving tasks. As the decision maker's total activity became greater than the workload bound, functions become delayed. During normal operation the task processing stage of all decision makers is equally delayed at one time unit, however functions causing a decision maker to become overloaded incur additional delay, thus degrading the organizational performance. The workload limit was varied among three different values, low, medium and high, during different iterations of the simulations.

The organization output was evaluated on performance measures that relate organizational performance to adaptation strategy. For a given task, there is only a limited period of time during which the organizational response will be effective. This time period is called a window of opportunity. The timeliness of each organizational response was scored based on the task's window of opportunity; if the response was within the window, it was given a score of one, otherwise it received a score of zero. Based on the score, the percentage of timely tasks can be calculated and used to compare the performance of different organizations under different adaptation strategies.

The organizational model is reviewed in Section 2. Section 3 describes in more detail the five stage interacting decision maker. Section 4 describes how ideas from information theory can be used to compute the individual decision maker's total activity, which will be used to monitor the decision maker's workload. The virtual experiment is presented in Section 5 as an example of the model, methodology, and effects of different adaptation strategies. Section 6 concludes the paper.

2. Organizational Model

An organization is formed in order to perform a set of tasks that individual decision makers cannot perform alone. The tasks to be performed by the organization consist of receiving signals or inputs from one or more sources, processing them, and producing outputs which can be actions or signals [Boettcher and Levis, 1983]. The structure of the organization is defined by the interactions between the decision makers. Models of organizations are used in order to answer a set of specific questions about its behavior. As the questions asked about organizations start to deal with change and adaptation, the models designed to answer these questions must be able to

exhibit change. Many of the early models of organizations used a structured analysis approach in order to design the behavioral models. These models are based on a fixed, functional decomposition of the tasks in the system [Levis, 1999]. The functions are then arranged in a specific partial order that when activated will achieve the goal. This partial order represents the process that the system invokes to respond to the task. This model of the system is fixed; any change made to the organization or to the process requires a change in the structure of the model, therefore this type of model can not answer questions about change.

An alternative modeling approach used for organizational modeling is the object oriented approach, which borrows techniques from software engineering. The object oriented methodology begins with the concept of an *object* [Rumbaugh *et al.*, 1991]. An object is an abstraction of the real world that captures a set of variables which correspond to actual real world behavior [Sage, 1993]. These objects are instantiated by the model as they are needed to represent the behavior of the organization. This approach can be used to create a model where the process is not fixed, but is represented by the order of the functions as they are invoked [Handley, 1999].

The object oriented design of the organization provides the top page in a hierarchical, Colored Petri net *executable* model. Petri nets provide a graphical modeling language with which to represent a system and an underlying mathematical theory for rigorous analysis [Murata, 1989]. They can represent the external interactions of the decision makers as well as any internal algorithms the decision maker must perform. Ordinary Petri nets are bipartite directed graphs [Peterson, 1981]. There are two sets of nodes: places denoted by a circle node and transitions modeled by a bar node. The arcs or connectors that connect these nodes are directed and fixed. They can only connect a place to a transition or a transition to a place. A Petri net also contains tokens. Tokens are depicted graphically by indistinguishable dots and reside in places. A marking of a Petri Net is a mapping that assigns a non negative integer, representing the number of tokens, to each place. A transition is enabled by a marking, if and only if all of its input places contain at least one token. An enabled transition can fire. When the firing takes place, a new marking is obtained by removing a token from each input place and adding a token to each output place. The dynamical behavior of the system is embedded in the changing of the markings.

Colored Petri nets are an extension of Petri nets [Jensen, 1990]. Instead of indistinguishable tokens, tokens now carry attributes or colors. Tokens of a specific color can only reside in places that have the same color set associated with them. The requirements to fire a transition are now specified through arc inscriptions; each input arc inscription specifies the number and type of tokens that need to be in the place for the transition to be enabled. Likewise, output arc inscriptions indicate what tokens will be generated in an output place when the transition fires. A global declaration node of the Colored Petri net contains definitions of all variables, color sets, and domains for the model.

The top page of the Colored Petri net model of the organization is shown in Fig. 1. The place with the color set *Scenario* must contain an initial marking of the list of tasks and their entrance times used to simulate the model. Each task enters the model at its indicated time through the first transition. Each task is initiated by a decision maker who completes the first function and

launches the process for that task. When one decision maker completes a function in the process, he uses his internal algorithms to identify the next function and the next decision maker in the process until the task is complete.

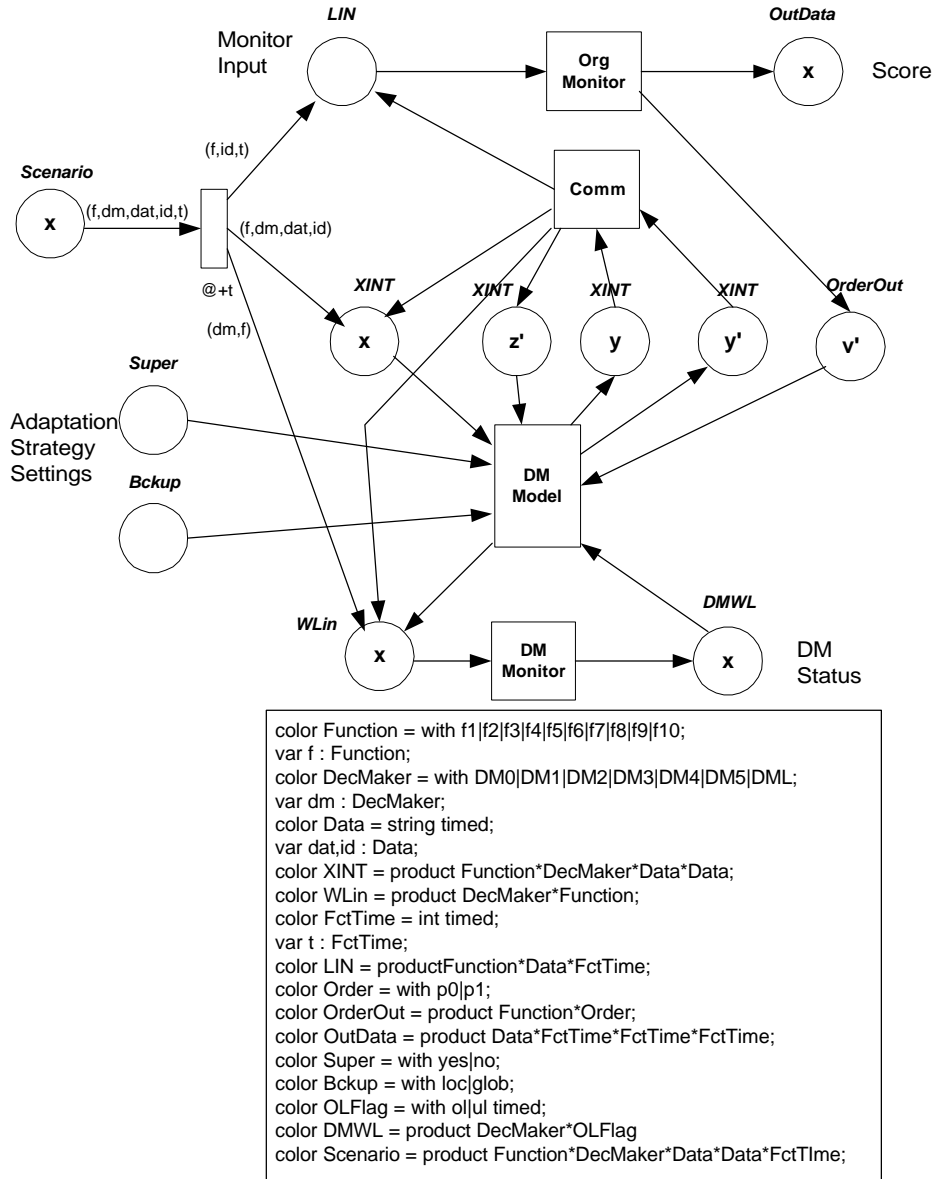


Figure 1: Colored Petri net Model of the Organization

The two places with color sets *Super* and *Bckup* are given initial markings to indicate the adaptation strategy to be used by the organization. The Communication sub page routes information among the decision makers and the monitors. The Org Monitor provides the organization's state information by generating a score for each task when it is completed. The initial decision maker in a task uses this information to select the process for a new task based on the last similar task's score, when the organization is operating under global adaptation. The DM Monitor provides decision maker status information by evaluating each decision maker's

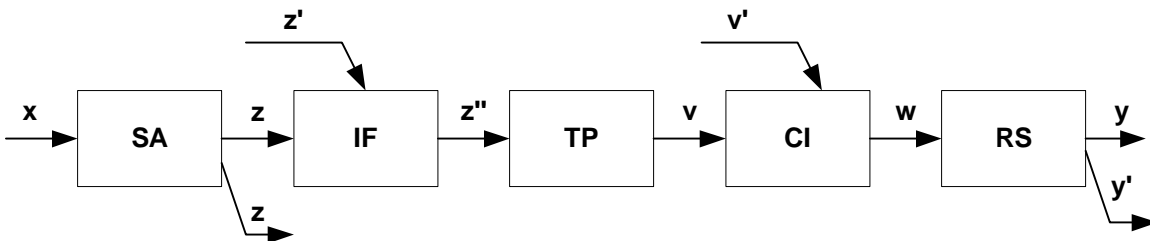
workload as functions are initiated and completed. The decision makers use this information to select alternative decision makers for overloaded decision makers when the organization is operating under local adaptation. The overloaded decision maker information is also used to insert a processing delay whenever an overloaded decision maker receives an additional function. The model continues to process tasks until the task list is exhausted and there is a score for each task. For a complete description of the organizational model see Handley [1999].

3. Decision Maker Model

The main component of the organizational model is the five stage decision maker model. March and Simon [1958] hypothesized that decision makers follow a two step process: first determining the situation and then determining a response. This led to a two stage decision maker model by Wohl [1981] and was expanded to four stages by Boettcher and Levis [1982]. Remy and Levis [1988] formalized the interactions between decision makers based on the four stage model. Levis [1992] presented a model of a five stage interacting decision maker that subsumed the previous models. The model presupposes that the decision makers are executing well-defined tasks for which they have been trained and that there is a limit to the amount of processing a decision maker can perform [Boettcher and Levis, 1982].

The five stage decision maker model of Levis [1992] is shown in Fig. 2. The decision maker receives a signal, x , from the external environment or from another organization member. The situation assessment stage (SA) represents the processing of the incoming signal to obtain the assessed situation, z , which may be shared with other decision makers. The decision maker can also receive a signal z' from another decision maker; z' and z are then fused together in the information fusion (IF) stage to produce z'' . The fused information is then processed at the task processing (TP) stage to produce v . A command or control information from another decision makers is received as v' . The command interpretation (CI) stage then combines v and v' to produce the variable w , which is input to the response selection (RS) stage. The RS stage then produces the output y to the environment, or the output y' to other decision makers.

Figure 2: Five Stage Interacting Decision Maker [Levis, 1992]



The model depicts the stages at which a decision maker can interact with other decision makers or the environment. A decision maker can receive inputs from the external environment only at the SA stage. However, this input x can also be from another decision maker's y' from within the organization. A decision maker can share his assessed input through the z output at this stage. The z' input to the IF stage is used when the decision maker is receiving a second data input. This input must be generated from within the organization and can be the output of another decision maker's SA or RS stage. The fused information from the IF stage, z'' , is the input to the TP stage. The decision maker's function is performed at this stage and results in the output v .

In the CI stage, the decision maker can receive control information as the input v_{ξ} . This is also internally generated and must originate from another decision maker's RS stage. In the RS stage, an output is produced; y is the output to the environment and y_{ξ} is the output to another decision maker. Thus the interactions between two decision makers are limited by the constraints enumerated above: the output from the SA stage, z , can only be an input to another decision maker's IF stage as z_{ξ} , and an internal output from the RS stage, y_{ξ} , can only be input to another decision maker's SA stage as x , IF stage as z_{ξ} , or CI stage as v_{ξ} .

Subsets of the five stage decision maker model, called *roles*, can be defined depending on the requirements of the function being performed by the decision maker. Since a single decision maker may be assigned to a variety of functions, he may be required to perform a variety of roles with different frequency during the execution of a process. By defining the different types of roles that may be required for the different functions as subsets of the five stage model, these individual role models can then be folded back into one decision maker model. This allows one decision maker model to represent the different roles that the decision maker may require while completing functions during the course of a process.

Since there are strong constraints in the allowable interactions between a decision maker and the external environment, as well as between a decision maker and the rest of the organization, as described in the preceding section, one way to define the required roles is in terms of the allowable interactions for each role. In other words, the different roles a decision maker needs to assume in the course of a process can be defined by the inputs he receives and the outputs he produces for each specified function he performs. The model has three inputs, x , z_{ξ} , and v_{ξ} which are inputs to the SA, IF, and CI stage respectively. It also has three outputs, z , y , and y_{ξ} which are outputs from the SA, RS, and RS stages respectively. Therefore the role required by a function can be specified by a vector representing these inputs and outputs as $[x, z_{\xi}, v_{\xi} : z, y, y_{\xi}]$. A one indicates that input or output is required, a zero indicates that it is not. Note that not all combinations are acceptable roles; the acceptable roles for each function in the process must be defined.

In the *independent role* (I) a decision maker can complete the function without interacting with other decision makers. This role only requires the x input and produces a y output. In the *Output Coordinating* role (OC) the decision maker needs to send his output to two or more subsequent decision makers. This role requires the input data x and both outputs y and y_{ξ} . In the *Input Coordinating* role (IC) the decision maker needs to receive inputs from two or more prior decision makers to complete his function. A decision maker in this role requires the input x and the information fusion input, z_{ξ} and produces the output y . Each of these roles is defined as a unsupervised mode, since none of them receive a v_{ξ} input. If the process is being completed autonomously by the decision makers, then these are the roles that are necessary. However, by adding the v_{ξ} input to each role, the roles are now supervised. The supervised mode is necessary to insert control information into the decision maker model when adaptation is present. Table 1 summarizes the three roles with their characteristic vectors. Note that the x in the v_{ξ} column represents that the role can be unsupervised if the value of x is zero and supervised if the value of x is one.

Table 1: Roles and Characteristic Vectors

ROLE	$(x, z, y, v : z, y, y)$
Independent (I)	(1, 0, x : 0, 1, 0)
Output Coordinating (OC)	(1, 0, x : 0, 1, 1)
Input Coordinating (IC)	(1, 1, x : 0, 1, 0)

4. Decision Maker Workload

One of the main causes of error in an organization's output, and therefore a main driver of organizational change, is overloaded decision makers. Decision makers can only handle a finite amount of activity in a given time period. If this amount of activity increases or the amount of time available to do the required activity decreases, the decision maker reaches a point where he can no longer accomplish his functions in the given time. This, in turn, manifests itself in the form of delayed output and/or incomplete or incorrect output. At an individual level, this may be sensed immediately by the subsequent decision maker in the task process. At the organizational level, the delay and/or error propagates through the process and effects the organizational output. When the organizational output no longer meets the requirements, it is a signal that the current process is no longer appropriate and an organizational change should be made.

4.1 Total Activity as a Workload Surrogate

An organization completes a task by using a specified process to produce the appropriate output in response to the task input; the process consists of a series of functions assigned to individual decision makers. Within this organizational context each decision maker acts as an information processing system. He receives signals or messages that contain information relevant to the functions he has to perform in the processing of the organizational task. He performs his requested function by interpreting his input information and produces output information. Therefore, it is postulated that, an information theoretic model of the decision maker can be used as a means to monitor the workload incurred by a decision maker as he performs different functions within the organizational task process [Boettcher and Levis, 1982].

A primary quantity of interest in information theory is entropy: given a variable x , which is an element of the alphabet \mathbf{X} , and occurs with probability $p(x)$, the entropy of x , $H(x)$, is defined to be

$$H(x) \equiv -\sum_x p(x) \log p(x).$$

Entropy is measured in bits per symbol when the base of the logarithm is two, as this is the number of binary digits needed to represent the value. Entropy represents the uncertainty associated with the variable: if one value is much more likely than the others, the entropy value will be low, however, if all values are equally likely, the entropy value will be at a maximum. The entropy, $H(x)$, is associated with each occurrence of x . As long as the probability distribution of x remains the same, each occurrence of x has the same entropy value. Total activity of a system, G , can be defined as the sum of the entropy of all the variables, w_i , in the system:

$$G = \sum_i H(w_i).$$

The total activity of the decision maker, G , has been used as a surrogate measure for the workload of the decision maker performing a function, which can not be measured directly [Levis, 1992]. Several steps are used to compute the total activity for each decision maker performing a function. First the algorithms present in each stage of the five stage model are defined in order to identify all the variables in the model. For each function, the algorithms active in each stage of the model must be identified and probabilities associated with the variables. The algorithms are also dependent on which adaptation strategy is being implemented. Then the total activity for a decision maker completing that function under a specified adaptation strategy can be calculated by summing the entropy of each stage; the total activity of the decision maker is equal to the sum of the total activities of each stage:

$$G = \sum_{i=1}^N G^i$$

where N is the number of stages [Conant, 1976].

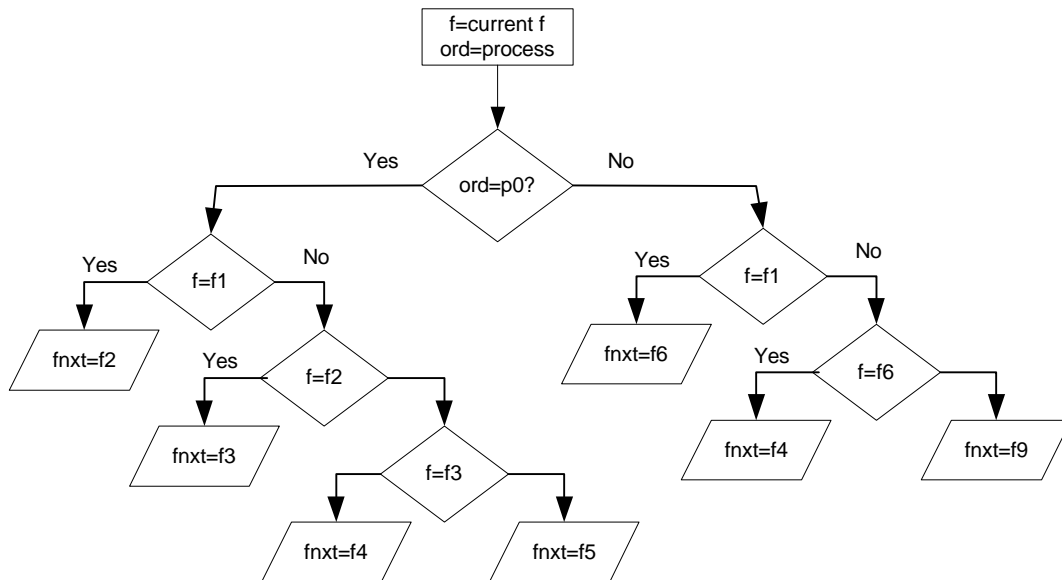


Figure 3: The Next Function Algorithm of the Response Selection Stage

The total activity due to the adaptation strategy is represented by the algorithms in the response selection and post stages. In the response selection stage the next function for a given process is found. When an organization is utilizing a global adaptation strategy, the algorithm must include all the alternative processes, as shown in Fig 3. If the organization is using none or local backup, this algorithm potentially contains fewer variables as it only maintains one process; thus the entropy calculation for this stage includes the overhead for the global adaptation strategy. When an organization implements the global adaptation strategy, the decision makers' response selection stage includes additional entropy due to maintaining information on all possible processes.

If the adaptation strategy is none or global, a secondary decision maker is not chosen, regardless of the status of the primary decision maker. In this case the output produced at the end of the response selection stage is the final output. However, if the strategy is local adaptation, a secondary decision maker is chosen in the post stage if the primary decision maker is overloaded; this algorithm is shown in Fig. 4. The entropy calculation for this stage includes the overhead for the local adaptation strategy. When an organization implements the local adaptation strategy, the decision makers' post stage includes additional entropy due to maintaining information on backup decision makers.

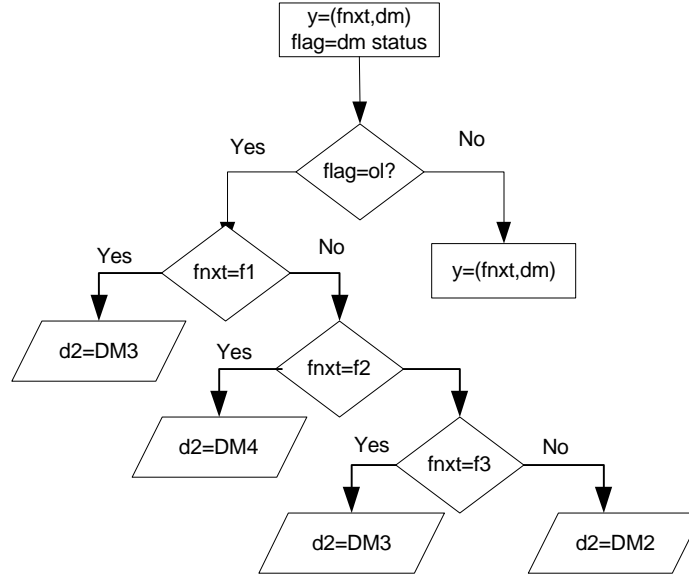


Figure 4: The Backup Decision Maker Algorithm of the Post Stage

Total activity based on the internal algorithms of the decision maker model has been previously used as the workload surrogate for a decision maker performing a single, repetitive function [Louvet *et al.*, 1988; Andreadakis, 1988; and Jin and Levis, 1992]. However, in an organization, a decision maker is often assigned to more than one type of function. He may be assigned a function early in the process and then another function later on. The set of functions an organization must perform within a process can be represented by a vector \mathbf{x} which takes values from an alphabet X , the set of organizational functions. Each component of the vector represents one of the functions, i.e.

$$\mathbf{x} \equiv (f_1, f_2, \dots, f_N) \quad \mathbf{x} \in X.$$

This vector can then be partitioned into groups of functions that are assigned to different decision makers through partitioning matrices. The partitioning matrix for the i^{th} decision maker is denoted Π^i , and results in the partition \mathbf{x}^i :

$$\mathbf{x}^i = \Pi^i \mathbf{x}.$$

The set of partitioning matrices $\{\Pi^1, \Pi^2, \dots, \Pi^i\}$ has been used to specify the inputs received by each decision maker from the organizational environment by Stabile and Levis [1984] and is now modified to represent the partition of the functions of a process to the individual decision makers. The resulting vectors, x^i , may have some, all, or no components in common. If there are duplicate components, this indicates that more than one decision maker is qualified to complete that function. This redundancy can be used later to determine the primary and secondary decision maker for the function necessary for the local adaptation strategy. Each decision maker is assigned a set of specific functions to perform based on the x^i partitions. The number and type of functions performed by the organization are determined by the process definition. The number of occurrences of each function within the set of processes the organization is performing can be used to assign probabilities to the input vector of each decision maker.

When a decision maker receives a function, he first determines which function it is. Because no learning takes place during the performance of a sequence of functions, the successive values taken by the variables of the model are uncorrelated, i.e., the model is memoryless [Boettcher and Levis, 1982]. The value of an arriving input is not known to the decision maker; rather, it is known only that an input is present. When a decision maker is assigned to more than one type of function, his task processing stage must include the alternative algorithms. Intuitively, a decision maker is assigned to functions based on his skills; these skills are represented as the set of function algorithms in his task processing stage.

Table 2: Methodology to Compute Decision Maker Total Activity

Step 1: Define Task Processing Algorithm for Each Function.
Step 2: Compute Total Activity for Each Function: -Include additional entropy due to role, -Consider inputs to function independent for input entropy calculation.
Step 3: Determine Each Decision Maker's Function Input Vector x^i : -Enumerate each Decision Maker's Function based on the Process(es) and -Consider each Adaptation Strategy.
Step 4: Compute Each Decision Maker's Total Activity: -Determine the Frequency of Each Function in the Set of Processes, -Add an Additional Decision Variable for each Additional Function.
Step 5: Compute the Additional Entropy due to Adaptation Strategy.
Step 6: Compute Each Decision Maker's Final Total Activity.

The final total activity for a decision maker performing a function is determined based on his set of assigned functions x^i and the adaptation strategy. Table 2 summarizes the steps to calculate each decision maker's total activity. The first step is to define the task processing algorithm for each function. The second step calculates the total activity for each function by calculating the entropy of the each stage's algorithm required by the role and summing the entropy of the stages. The inputs to the functions are considered independent for this calculation, unless there is reason not to. At the end of this step, there is a total activity value for each function.

Step three considers the set of functions being performed by each decision maker. This set changes, based on what process(es) are being considered and what adaptation strategy is being implemented. For example, different processes contain different sets of functions. The set of functions should include only the functions required by the processes being considered for that

organizational configuration. Likewise local adaptation requires backup functions which may not be included in global adaptation. In step four, the frequency of each function within each decision maker's set of functions can be used to calculate the input entropy associated with the choice of task processing algorithm to use in the decision maker's task processing stage; likewise, for each function beyond one, additional entropy must be included to determine which task processing algorithm to use.

Step five computes the additional entropy due to the existence of the adaptation strategy. The next function algorithm in the response selection stage and the backup decision maker algorithm in the post stage both depend on the adaptation strategy. The entropy associated with both of these algorithms must be calculated under the different strategies. Finally each decision maker's total activity can be calculated by using the total activity value from step four and adding the appropriate additional entropy based on the adaptation strategy from step five. This total activity value can now be used as an estimate of the workload a decision maker experiences each time he is asked to perform one of his assigned functions.

Now, assume the decision maker is asked to do two functions from his set of functions. His total activity increases. If he consistently uses the same algorithmic structure, that is his internal variables are the same, the total activity for two functions, G_2 , is [Louvet *et al.*, 1988]:

$$G_2 = H(x') + \sum_{i=1}^k H(w_i) + \sum_{i=k+1}^{2k+1} H(w_i) + H(y')$$

where x' and y' represent the dual input and dual output respectively. If the probability distributions for the input and output variables composing the input and output pair are the same as in the single task case then

$$G_2 = 2H(x) + 2\sum_{i=1}^k H(w_i) + 2H(y) \leq 2G_1$$

where G_1 is the total activity of the single task case. This indicates that the total activity value calculated for a decision maker performing a single function from his set of functions can be doubled and used to represent the total activity he experiences when he performs two functions from his set of functions. This property is the independence bound on entropy which states that

$$H(X_1, X_2, \dots, X_n) \leq \sum_{i=1}^n H(X_i)$$

with equality if and only if the X_i are independent [Cover and Thomas, 1991]. This can be used to monitor the workload of the decision maker: each time the decision maker receives a function to perform, his current workload is increased by his total activity value. Each time he completes a function, his workload is decreased by this amount. Thus the current workload of the decision maker depends on the number of functions he performs simultaneously. As long as the probability distribution of the input variable remains constant, the total activity of the aggregate functions a decision maker is responsible for can be used as a workload monitor for the decision maker.

4.2 The Effect of Adaptation Strategy on Total Activity

The majority of the total activity value comes from three stages, the task processing stage, which holds the algorithms for all the functions the decision maker is responsible for, and the response

selection and post stages, where the next function and next decision maker in the process are chosen. This dependency can be shown as

$$G_{TOT} \propto (G_{TP}, G_{RS}, G_P)$$

where G_{TOT} is the total activity of the decision maker, G_{TP} is the total activity of the task processing stage, G_{RS} is the total activity of the response selection stage, and G_P is the total activity of the post stage. G_{TP} is dependent on the number of functions a decision maker is responsible for, n_f , assuming they have a comparable number of internal decision variables:

$$G_{TP} = f(n_f).$$

G_{RS} and G_P are dependent on the adaptation strategy. First consider the case of no adaptation strategy. G_{RS} contains the algorithm to select the next function for a single process P_0 ; the total activity associated with this algorithm depends on the internal variables of the P_0 decision tree, w_{P_0} :

$$G_{RS-NONE} = f(w_{P_0}).$$

Since no backup decision maker information is necessary for this adaptation strategy, the total activity of the post stage is zero:

$$G_{P-NONE} = 0.$$

Therefore the total activity for a decision maker under the none adaptation strategy can be represented as

$$G_{TOT-NONE} = f(n_f, w_{P_0}, 0).$$

The local adaptation strategy increases the total entropy of the decision maker in two ways. First, it may increase the number of functions a decision maker is responsible for by adding additional functions due to backup responsibilities, n_{Bupf} , which increases G_{TP} :

$$G_{TP-LOCAL} = f(n_f + n_{Bupf}).$$

These are backup functions that the decision maker is responsible for that were not previously included in his partition. Secondly, it adds the backup decision maker algorithm w_{Bup} to the post stage, increasing G_P :

$$G_{P-LOCAL} = f(w_{Bup}).$$

The activity of the response selection stage is unchanged, as local adaptation only supports one process. Therefore the total activity for a decision maker under the local adaptation strategy can be represented as

$$G_{TOT-LOCAL} = f(n_f + n_{Bupf}, w_{P_0}, w_{Bup}).$$

The global adaptation strategy also increases the total entropy in two ways. First, it also may increase the number of functions a decision maker is responsible for by adding additional functions, n_{P1f} , which increases G_{TP} :

$$G_{TP-GLOBAL} = f(n_f + n_{P1f}).$$

These are additional functions due to the second process that the decision maker is now responsible for that were not previously included in his partition. Secondly, it adds a second next function algorithm to the response selection stage, w_{P1} , representing the alternative process, increasing G_{RS} :

$$G_{RS-GLOBAL} = f(w_{P_0} + w_{P1}).$$

Similar to the none adaptation strategy, global adaptation does not support decision maker backup, therefore the activity of the post stage remains at zero. Therefore the total activity for a decision maker under the global adaptation strategy can be represented as

$$G_{\text{TOTAL-GLOBAL}} = f(n_f + n_{\text{Pif}}, w_{\text{P0}} + w_{\text{P1}}, 0) .$$

Both adaptation strategies increase the decision maker's total activity value greater than the none strategy. They both may increase the number of functions a decision maker is responsible for which increases the total activity of the task processing stage. The principal difference is in the response selection and post stages: local adaptation adds an additional algorithm to the post stage, while global adaptation adds an additional algorithm to the response selection stage. Local and global adaptation are orthogonal; which strategy has a greater effect depends on the specific organization and its task graphs. It cannot be determined by inspection, an executable model is necessary to determine the more effective strategy.

4.3 Monitoring Decision Maker Workload and Organizational Performance

The total activity value for each decision maker represents the workload he incurs each time he receives any one of the functions from his partition; one total activity value is associated with each decision maker for each organizational design, i.e. function allocation and adaptation strategy. If the adaptation strategy is changed or the function partition is changed, the total activity value must be recalculated. The independence bound property of entropy was used to show that if the decision maker receives two functions at once, from his partition of functions, his total activity value doubles. This can be generalized to multiple occurrences of simultaneous functions: each time the decision maker receives a function, his current workload is increased by the total activity value and each time he completes a function his total workload is decreased by the total activity value. The current total activity of the decision maker, G_{CUR} can be expressed as

$$G_{\text{CUR}} = \sum_1^n G = G * n .$$

This is possible because the single total activity value for each decision maker includes the uncertainty associated with the *set* of functions partitioned to the decision maker. This assumes that there is no interactions between functions, that is they are independent; the decision maker has no knowledge of what his next function will be.

However, in order to use total activity as a decision maker monitor, it is necessary to determine the decision maker's workload limit. Perdu and Levis [1998] set a limit on the number of tasks a decision maker could simultaneously process; each decision maker and task were treated identically. However, in this case, each decision maker's total activity is different based on his functional mapping; it can be assumed that a decision maker with a lower total activity can assume more tasks than a decision maker with a higher total activity. By using total activity as a means to monitor the workload status of a decision maker during the course of repeated processes, concepts similar to the bounded rationality constraint can be used to establish a workload limit.

In studies of the cognitive demands of command and control on decision making organizations, it was found that a performance decrease occurs when the task demands exceed some limit [Levis, 1993]. The mathematical model that is used to represent this phenomenon is that of the bounded rationality constraint, which states that if the workload rate exceeds some value, rapid

degradation of performance occurs. Decision makers normally operate at a level where the bounded rationality constraint is not in effect. The bounded rationality constraint can not be determined analytically but can be established experimentally. Consider the situation in which a decision maker is performing a sequence of functions with interarrival time τ . The workload experienced by the decision maker can be expressed as:

$$G = Ft; t \leq \tau$$

where G is the decision maker's workload or total activity as previously calculated (bits per symbol), F is the decision maker's processing rate (bits per symbol time), and t is the portion of the inter-arrival time during which the decision maker is processing the function. If τ is more than ample, various tradeoffs between F and t are possible, as G for the function is fixed. However, for sufficiently small values of τ , t will approach τ , and the decision maker must increase F in order to maintain G and thereby avoid degradation of performance. When further increases in F are not possible, at the interarrival time $t \approx \tau$, the decision maker has reached the bounded rationality constraint, F_{\max} [Levis, 1993].

Since the bounded rationality constraint can not be determined analytically, an adjustable workload limit is used in the model. The workload limit places an upper bound on the amount of tasks a decision maker can accept in one processing interval. If the decision maker receives a set of inputs that exceeds the workload limit, the decision maker's status changes to "overloaded". If new functions are sent to the decision maker while he is in the overloaded status, they are delayed one processing unit, representing the degradation in performance associated with overloaded decision makers. When the decision maker's status returns to "underloaded", functions are once again completed in a single processing unit. The local or decision maker monitor provides the mechanism to monitor the workload of the individual decision makers. The output of the monitor, the decision makers' workload status, is used in the post stage of the decision maker model to determine if a backup decision maker is necessary when the organization is operating under local adaptation, and to indicate when functions should be delayed due to overloaded decision makers.

Timeliness expresses the organization's ability to respond to an incoming task within an allotted time. The allotted time is the time interval over which the output produced by the organization is effective in its environment. This allotted time can be described as a window of opportunity whose parameters are determined a priori by the requirements of the task. Different task types may have different windows of opportunity. Two quantities are needed to specify the window of opportunity: the lower and the upper bounds of the time interval, t_s and t_f , respectively, or one of the bounds and the length of the interval, e.g. t_s and Δt [Cothier and Levis, 1986]. In the situation where repetitive tasks will be processed, where the start time of each task will be dependent on the scenario driving the model, the window of opportunity for each task type is defined a priori with the second method with t_s set to zero. The organization's response time is represented by the first method: the lower bound is the initial time of the task as received by the organization and the upper bound is the finish time of the task. The organization's response time is the time delay between the moment when the organization receives a task and the moment it produces an output.

In order to evaluate if the organization's output is timely, the organization's response time is compared to the window of opportunity of the task. The initial time of the task, t_s , is sent to the

organization monitor function. When the last function of the process is complete and the final output is made, the final time of the task t_f is also sent to the organizational monitor. The comparison of the difference between these two times is compared to the window of opportunity by the function $d((0, \Delta t), (t_s, t_f))$ which represents the timeliness of the output. A binary measure can be assigned to each task to represent the organization's score, s , for this task based on timeliness. If the response time is less than or equal to the window of opportunity, the organization receives a score of one, indicating a timely response. If the output is outside this window, indicating the response took too long, the organization receives a score of zero.

$$s = d((0, \Delta t), (t_s, t_f)) = \begin{cases} 1: t_f - t_s \leq \Delta t \\ 0: t_f - t_s > \Delta t \end{cases}$$

The score can be used as both a performance measure for the organizational output and as a trigger of adaptation for process selection. For example, if a task receives a score of zero, it is a signal that the current process is not performing adequately. The organization should switch processes for that task type in order to correct the untimely response. The organizational monitor provides task feedback to use to determine the process for each task type when the organization is in a global adaptation mode, and provides the score for each task processed based on the timeliness of the organization's response, regardless of the mode. It receives the first and last time stamps of the process; the start time is when the task is received by the system and the finish time is when the last function is completed. It subtracts these two times and compares the difference to the task window of opportunity. It must then assign a score to the task, and if the organization is implementing a global adaptation strategy, indicate a process switch, if necessary.

5. Virtual Experiment

A virtual experiment was conducted by configuring the organizational model to actual experimental organizations and evaluating the effectiveness of the alternative strategies. In order to configure the model, three inputs are required: the task graph, the organizational design, and the experimental design. The task graphs and the organizational designs were obtained from a recent subject experiment studying organizational adaptation, while the experimental design was created specifically to evaluate the different adaptation strategies. The organizational model was configured into two different organizational designs and executed under the three different adaptation mechanisms: no adaptation allowed, local adaptation using alternative decision makers, and global adaptation using alternative process selection. The resulting performance of the different organizations under different adaptation strategies was then compared.

5.1 Experimental Design

The Adaptive Architectures for Command and Control (A2C2) is a research initiative to investigate the process of adaptation in Joint Command and Control architectures at the Commander Joint Task Force Level. Organizations are designed to carry out a predefined mission under different stress levels: when full resources are available to complete the mission the organization experiences low stress; when the number of resources is reduced, the organization experiences higher stress as it strives to complete the same mission with less resources. The organizations that are designed are modeled and executed in a virtual environment: scenarios are created that represent the mission and threats that the organization

will experience. The organizations are then used in subject experiments where humans respond to a simulated environment through a computer simulation.

The organizations designed for the A2C2 second experiment had a sequence of tasks to perform based on an overall mission: to secure the port and airfield of a friendly nation invaded by a hostile neighbor. The sequence of tasks was represented by a task graph that included beach landing, clearing roads, and coordinating the storming of the port and airfield. It also included defensive tasks, i.e., responding to threats launched by the enemy. Each of these defensive tasks can be represented by its own task graph: the series of functions that must be performed in order to respond to the threat. Two specific threat tasks that occurred during the “clearing roads” portion of the mission were identified for the virtual experiment: Frog launchers (FROG) and Silkworm missiles (SILK). Both of these threats had a window of opportunity for the organization’s response: if the response was made within a certain time period the enemy would withdraw the threat and retreat back into their bunkers. Both a nominal and alternative process was defined for both tasks, resulting in a total of nine different functions as shown in Table 3.

Table 3: Organizational Functions and Characteristics

Function	Description	Role Required	Function Type
f1	Threat Notification	Independent	Non Choice
f2	Choose Platform	Independent	Choice
f3	Contact Launch	Independent	Non Choice
f4	Launch Platform	Independent	Non Choice
f5	Confirm Launch	Independent	Non Choice
f6	Coordinate Attack	Output Coordinating	Non Choice
f7	Choose Verification	Independent	Choice
f8	Threat Confirmation	Independent	Non Choice
f9	Confirm Coord Launch	Input Coordinating	Non Choice

Two distinct organizational structures, termed “Traditional” and “Non Traditional” were designed for the subject experiment; each had six decision makers. In the A2C2 program, decision makers are defined by the resources they are assigned rather than the skills they possess; however, the decision maker can be assumed to have the skills necessary to operate the resources. The Traditional organization allocated resources to decision makers in a geographic manner, while the Non Traditional organization allocated resources in order to balance the decision maker workload. The total activity value to use for each decision maker, under two different process and the three different adaptation strategies, was calculated for the two different organizational designs as shown in Table 4. Note that the number of decision makers is the same in both architectures and the functions to be performed are identical, however the distribution of functions to decision makers is different.

Table 4: Decision Maker Total Activity (bits per symbol)

Organization	Traditional			Non Traditional		
	None	Local	Global	None	Local	Global
DM0	20.6	28.4	35.1	34.7	43.7	49.2
DM1	50.0	57.8	71.7	42.1	51.1	56.6
DM2	29.8	37.6	44.3	28.0	37.0	42.5
DM3	50.0	57.8	71.7	37.8	47.6	52.3
DM4	28.6	40.8	63.9	34.2	43.2	48.7
DM5	32.9	40.8	63.9	34.2	43.2	48.7

In order to stimulate the organizational models under different conditions, scenarios of input tasks were generated to provide a series of threat inputs to the organization. The organization was stimulated with two sets of scenarios: one set varies the interarrival time of the tasks, it consist of three series of 32 tasks, the second set varies the number of tasks arriving at one time interval, it consists of three series of 32, 40, and 48 tasks. The nominal process was selected for the initial configuration. An organization adapting through local change will maintain this process, and will select secondary decision makers for overloaded decision makers. An organization using strategic adaptation will continue to use the primary decision makers but will be allowed to implement alternative processes at the start of a new task. In order to cause the organization to change, it must be stressed; it can be stressed in two ways: increasing the frequency of arriving tasks or increasing the number of tasks arriving per time. In the case of local change, adaptation should occur as individual decision makers become overloaded. In the case of global change, adaptation should not occur until the organizational output deteriorates. The level of tolerance of the organization can be varied through the value of the workload limit. An organization with a low level of tolerance will change at a minimal level of stress while an organization with a high level of tolerance will not change until a high level of stress is reached.

The independent variables of the experiment are those controlled by the experimental setup: the organizational configuration, the adaptation strategy, and the level of stress tolerated by the decision makers varied through the value of the workload limit. The dependent variable, or the variable to be observed and measured, is the score of each task based on the timeliness of the organizational response. For each scenario of tasks used to simulate the organization under a specific strategy, the percentage of tasks with a score of one, or the timeliness percentage S , can be calculated:

$$S_{\text{Scenario}} = n_{s=1} / n$$

where n is the number of tasks in the scenario and $n_{s=1}$ is the number of tasks that received a score of one. This represents the percentage of tasks that the organization completed in a timely manner. The experimental sample space is shown in Table 5.

Table 5: Experimental Sample Space

Organization	Traditional			Non Traditional		
Adaptation	None	Local	Global	None	Local	Global
Tolerance	L M H	L M H	L M H	L M H	L M H	L M H
Task Interarrival:						
Low						
Medium						
High						
Simultaneous Tasks:						
Low						
Medium						
High						

For both organizations, the model was first simulated with no adaptation strategy. In this mode, each time the next function in a process is assigned to an overloaded decision maker, the function incurs a processing delay of one time unit, thereby affecting the timeliness of the completion of the process. The next strategy implemented was the local adaptation strategy. In this mode, each time the next function in a process is assigned to an overloaded decision maker, an alternative decision maker is chosen. A processing delay of one time unit is incurred only if the alternative decision maker chosen is overloaded as well. In global adaptation, if the next decision maker chosen is overloaded, the function occurs a processing delay of one time unit, the same as with no adaptation. However, if the task receives a score of zero upon completion of the process, indicating it was not completed in a timely manner, the next task of this same type will be implemented with the alternative process.

Because the workload limit, the total activity a decision maker can sustain without performance degradation, can not be calculated analytically, three different values of the workload limit were used in the experiment. The high tolerance level was determined by taking the highest decision maker total activity value and doubling it. The low tolerance level was determined by taking the lowest decision maker total activity value and doubling it, the medium level is the median between the two. For this experiment the tolerance level values, the workload limit, were set as follows: low = 50, medium = 100, and high = 150, all in bits per symbol. The workload limit determines the number of tasks each decision maker can accept in a processing interval without being overloaded.

5.2 Experimental Results

The experimental results indicate that under some conditions, there are no significant differences between the adaptation strategies. For the conditions where the differences in performance were significant, the strategy with the higher performance can be identified. The results are summarized in Fig. 5. When an organization does not experience stress, the organization with no adaptation strategy performs as well or better under all three workload tolerance levels. In this case the decision makers do not have the additional total activity associated with an adaptation strategy and therefore are less likely to become overloaded. However, as the stress on an

organization is increased, at low levels of workload tolerance, the local adaptation strategy performs as well or better under medium stressed conditions and out performs an organization with no adaptation strategy under the most stressed conditions. As the workload limit is increased, increasing the tolerance level, the local adaptation strategy performs as well as no adaptation strategy under low and medium stressed conditions, but the local and global adaptation strategies perform the best under the most stressed condition. Finally when the workload limit is at its maximum, all three strategies perform usually as well under low stress conditions, however as the stress is increased, the global adaptation strategy performs the best.

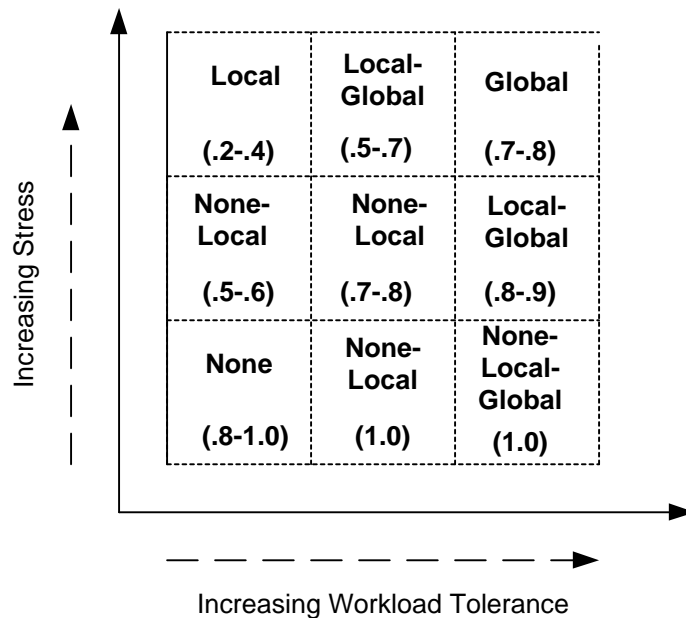


Figure 5: Experimental Results

The numbers in parenthesis under the adaptation strategy in Fig. 5 represent the performance measure range, the timeliness percentage values for the region. While the None strategy outperforms the other strategies in the low tolerance, high stress conditions, its performance is still quite low as indicated by the range 0.2 to 0.4 of the tasks completed in a timely manner. In comparison, in the high tolerance, high stress condition under the Global adaptation strategy, 0.7 to 0.8 of the tasks were completed in a timely manner.

A second analysis compared the performance of the two different organizations, as shown in Table 6. Based on the value of the timeliness percentage performance measure, the Non Traditional (NTA) organization usually performed better or the same as the Traditional (TA) organization, where significant differences exist. This reflects the balance workload among the decision makers in the Non Traditional organizational design, indicated by the total activity values of the individual decision makers. The balanced workload implies that the decision makers are all operating under similar stress conditions. In the Traditional organization, two decision makers have a very high total activity value, while one has a very low total activity value. This imbalance causes the performance of some decision makers to degrade earlier than the others, affecting the performance of the entire organization; this degradation happens earlier in the Traditional organization than in the Non Traditional organization.

Table 6: Organizational Structure with Best Performance

Tolerance	Low			Medium			High		
Strategy	Global	Local	None	Global	Local	None	Global	Local	None
Low Stress	NTA	NTA							
Medium Stress	NTA	NTA	TA	NTA			TA		
High Stress	NTA			NTA	NTA	TA	NTA	NTA	NTA

6. Conclusions

This paper reviewed an executable organizational model which can be used to evaluate the effect on performance of different organizational adaptation strategies. The five stage decision maker model is used to model the decision makers within the organization. The different roles a decision maker may assume in the course of completing different functions in a process were defined. Since this model allows the active algorithms in each stage to be defined, the total activity, a surrogate for decision maker workload, can be calculated. A procedure to compute a decision maker's total activity based on the entropy of the set of functions he is required to perform and the active algorithms in each of his stages is presented; the process used to complete the task and the adaptation strategy implemented by the organization also effects the total activity calculation.

By using entropy to calculate each decision maker's total activity, the impact of different functions, processes and adaptation strategies are reflected in the value used to evaluate overloaded decision makers. As the number of different functions a decision maker is responsible for increases, the number of task processing algorithms he must maintain increases. The total activity value also includes the overhead due to adaptation strategy. Both local and global adaptation increase the number of functions assigned to each decision maker: local adaptation includes backup functions and global adaptation adds functions present in alternative processes. Both strategies affect the final output of the decision maker: global adaptation forces the decision maker to maintain the rulebase of alternative process for use in the next function selection, while local adaptation requires secondary decision maker information for use in the next decision maker selection.

Because different combinations of the three variables function, process, and adaptation strategy may lead to different conclusions as to which strategy is more effective, organizational model should be used to evaluate the alternative strategies for particular organizational designs. A virtual experiment was conducted using data from recent subject experiments in order to evaluate the different adaptation strategies on two different organizations: one with a balanced workload and one without. The model was configured to each organization and simulated with scenarios that stressed the organizations. The simulation results indicate that the global adaptation strategy was most effective under high stress and high workload tolerance conditions, and the organization with balanced workload generally performed better.

7. References

- [Andreadakis, 1988] Stamatios Andreadakis. "Analysis and Synthesis of Decision-Making Organizations," LIDS-TH-1740, Ph.D. Thesis, Laboratory for Information and Decision Systems, MIT, Cambridge, MA, 1988.
- [Boettcher and Levis, 1982] Kevin L. Boettcher and Alexander H. Levis. "Modeling the Interacting Decisionmaker with Bounded Rationality," *IEEE Transactions on Systems, Man and Cybernetics*, Vol. SMC 12, No. 3, pp. 334-344, 1982.
- [Boettcher and Levis, 1983] Kevin L. Boettcher and Alexander H. Levis. "Decisionmaking Organizations with Acyclical Information Structures," *IEEE Transactions on Systems, Man and Cybernetics*, Vol. SMC 13, No. 3, pp. 384-391, 1983.
- [Carley, 1995] Kathleen M. Carley. "Automatic Restructuring of the C2 Structure and Performance," *Proceedings of the First International Symposium on Command and Control Research and Technology*, National Defense University, Washington, DC, pp. 227-237, 1995.
- [Carley, 1998] Kathleen M. Carley. "Organizational Adaptation," *Annals of Operations Research*, Vol. 75, pp. 25-47, 1998.
- [Conant, 1976] Roger C. Conant. "Laws of Information which Govern Systems," *IEEE Transactions on Systems, Man, and Cybernetics*, Vol. SMC 6, No. 4, pp. 240-255, 1976.
- [Cothier and Levis, 1986] Phillippe H. Cothier and Alexander H. Levis. "Timeliness and Measures of Effectiveness in Command and Control," *IEEE Transactions on Systems, Man, and Cybernetics*, Vol. SMC 16, No. 6, pp. 844-853, 1986.
- [Cover and Thomas, 1991] Thomas M. Cover and Joy A. Thomas. *Elements of Information Theory*, Wiley Series in Telecommunications, John Wiley and Sons, 1991.
- [Handley, 1999] Holly A. H. Handley. "Effecting and Evaluating Organization Adaptation via Dynamic Process Selection," Ph.D. Dissertation, School of Information Technology and Engineering, George Mason University, Fairfax, VA, 1999.
- [Jensen, 1990] K. Jensen. *Coloured Petri Nets: Basic Concepts, Analysis Methods and Practical Use*, Springer-Verlag, Berlin, Germany, 1990.
- [Jin and Levis, 1992] V.Y. Jin and A. H. Levis. "Impact of Organizational Structure on Team Performance: Experimental Findings," in *Toward a Science of Command, Control, and Communications*, Carl R. Jones, Ed., AIAA Press, Washington, DC, 1992.
- [Levis, 1992] Alexander H. Levis. "A Colored Petri net Model of Intelligent Nodes," *Robotics and Flexible Manufacturing Systems*, J.C. Gentina and S.G. Tzafestas, Eds., Elsevier Science Publishers, The Netherlands, 1992.

[Levis, 1993] Alexander H. Levis. "Human Interaction with Decision Aids: A Mathematical Approach," in *Human/Technology Interaction in Complex Systems*, W.B. Rouse, Editor, JAI Press, 1993.

[Levis, 1999] Alexander H. Levis. "System Architectures," in *The Handbook on Systems Engineering and Management*, A.P. Sage and W.B. Rouse, Editors, Wiley, NY.

[Louvet *et al.*, 1988] A.C. Louvet, J. T. Casey, and A. H. Levis. "Experimental Investigation of the Bounded Rationality Constraint," in *Science of Command and Control: Coping with Uncertainty*, S.E. Johnson and A. H. Levis, Eds. AFCEA International Press, Fairfax, VA, 1988.

[March and Simon, 1958] J.G. March and H. A. Simon. *Organizations*, John Wiley and Sons, NY, 1958.

[Murata, 1989] Tadao Murata. "Petri Nets: Properties, Analysis and Applications," *Proceedings of the IEEE*, Vol. 77, No. 4, pp. 541-579, 1989.

[Perdu and Levis, 1998] D. M. Perdu and A. H. Levis. "Adaptation as a Morphing Process: A Methodology for the Design and Evaluation of Adaptive Organization Structures," *Computational and Mathematical Organization Theory*, Vol. 4, No. 1, pp. 5-41, 1998.

[Peterson, 1981] J. L. Peterson. *Petri Net Theory and the Modeling of Systems*, Prentice Hall, Englewood Cliffs, NJ, 1981.

[Remy and Levis, 1988] P.A. Remy and A. H. Levis. "On the Generation of Organizational Architectures using Petri nets," in *Advances in Petri Nets*, G. Rozenberg, Editor, Springer-Verlag, Berlin, 1988.

[Rumbaugh *et al.*, 1991] James Rumbaugh, Michael Blaha, William Premerlani, Frederick Eddy, and William Lorenzen. *Object-Oriented Modeling and Design*, Prentice-Hall, Inc. Englewood Cliffs, NJ, 1991.

[Sage, 1993] A. P. Sage. "Object Oriented Methodologies in Decision and Information Technologies," *Information and Decision Technologies*, Vol. 19, No. 1, pp. 31-54, 1993.

[Serfaty and Entin, 1995] Daniel Serfaty and Elliot E. Entin. "Shared Mental Models and Adaptive Team Coordination," *Proceedings of the First International Symposium on Command and Control Research and Technology*, National Defense University, Washington, DC, pp. 289-294, 1995.

[Stabile and Levis, 1984] D. A. Stabile and A. H. Levis. "The Design of Information Structures; Basic Allocation Strategies for Organizations," *Large Scale Systems*, Vol. 6, pp. 123-132, 1984.

[Wohl 1981] J.G. Wohl. "Force Management Decision Requirements for Air Force Tactical Command and Control," *IEEE Transactions on Systems, Man, and Cybernetics*, Vol. SMC-11, No.9, 1981.