

ID# 188

“Ensuring Agile Power to the Edge Approach in Cyberspace”

Hiroshi Yamaguchi

(Professor, Research & Development Initiative, Chuo Univ. Japan)

Yuko Mori

**(Former Professor, Roosevelt University Chicago College of Performing
Arts, The Music Conservatory)**

Chitoor V. Ramamoorthy

**(Department of Electrical Engineering & Computer Science, University of
California, Berkeley)**

Contents

- **The Proposed Approaches**
- **Extensive development and maintaining high quality information structures**
- **Semantically Structured Information Model**
- **Modeling the self-synchronized force approach**
- **Processing flow of the proposed approach**
- **Evaluation of above approaches by orchestra organization without conductor**

Cyberspace management conceptual framework

Required Properties

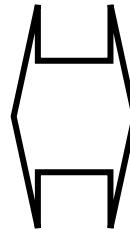
Shared Information

Shared Awareness

Shared Understanding

Self Synchronization

Collaborative Decisions



Proposed Methodologies

Hybrid Organization

Role of Leader

Role of Subordinates

Creativeness

Evaluation

Proposed Methodology; “Mori Method”

**Hybrid Organization,
Backward & Random Allocation**



Anticipation of Director



Anticipation of Player



Semantically Structured Imagination



Process Flow, Feedback system

Required properties for NCW/PTE

(1) Shared Information

(2) Shared Awareness

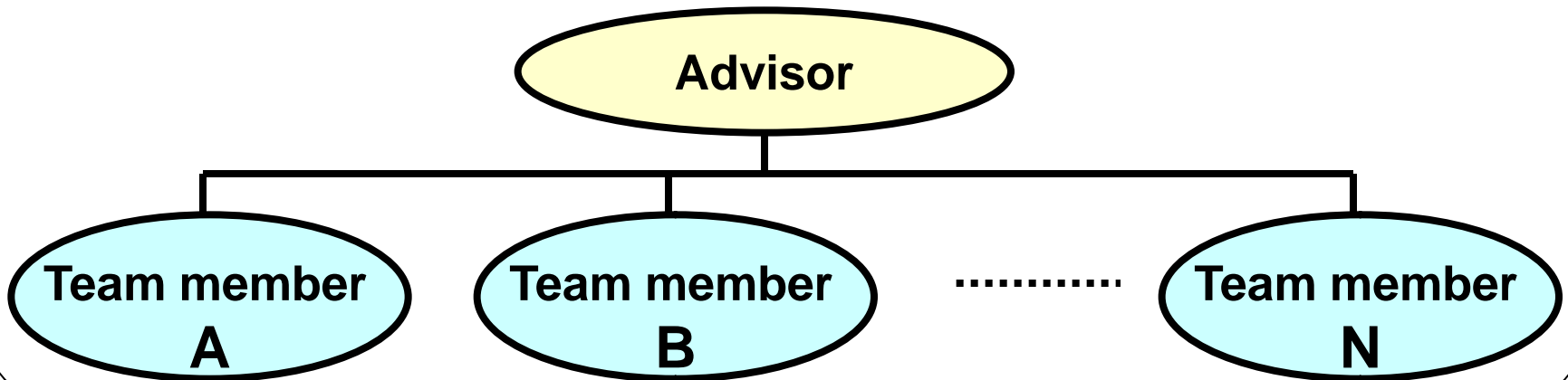
(3) Shared Understanding

(4) Self-Synchronization

(5) Effectiveness

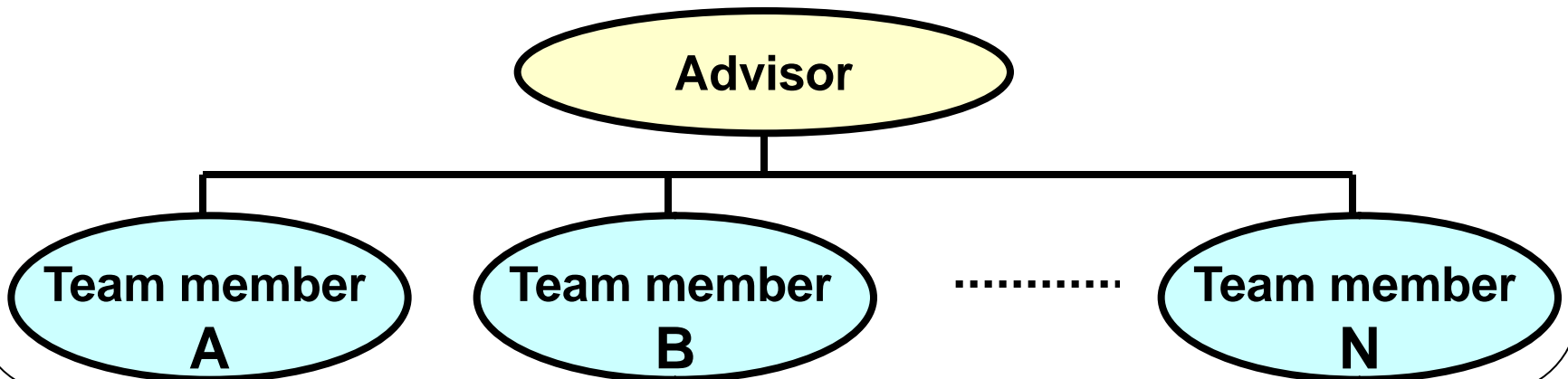
Hybrid Organization

Hlerarchical Organization

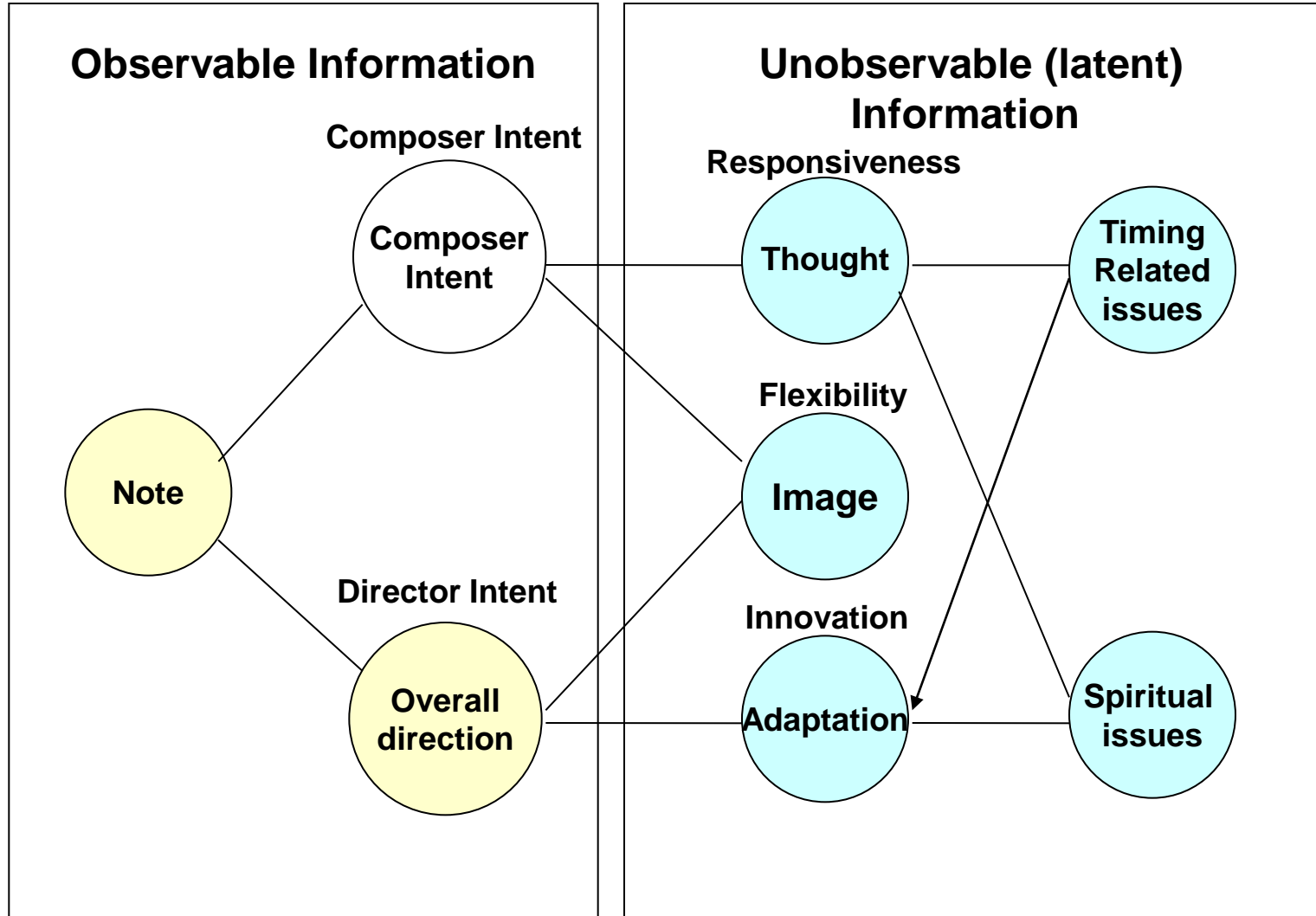


Iteration

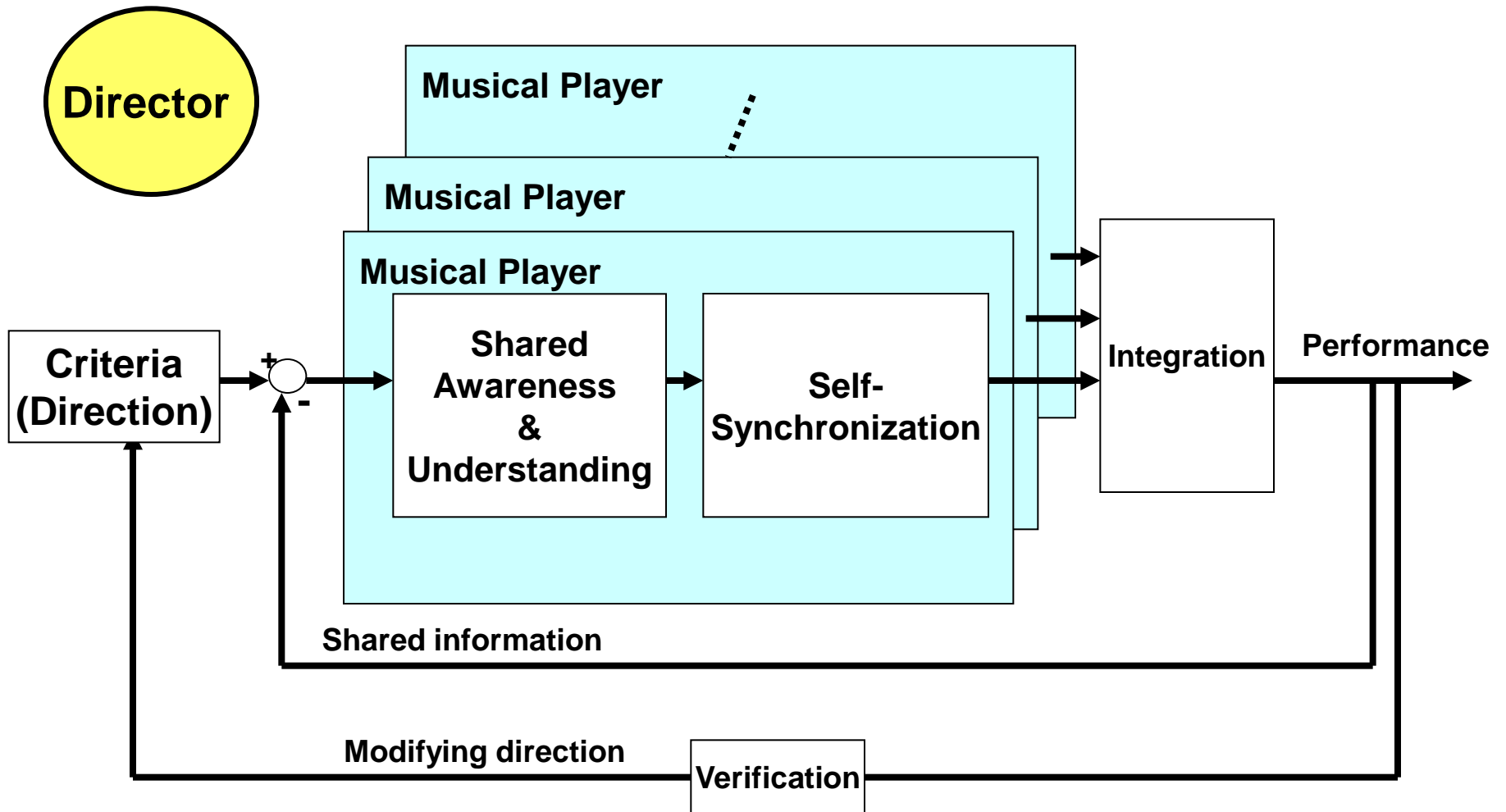
Flat Organization



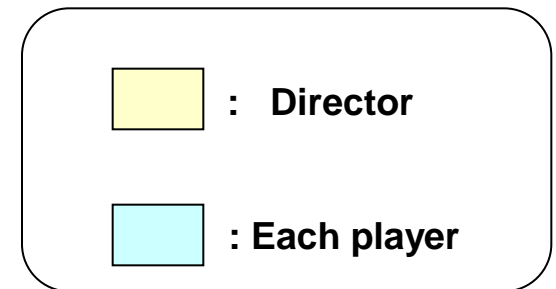
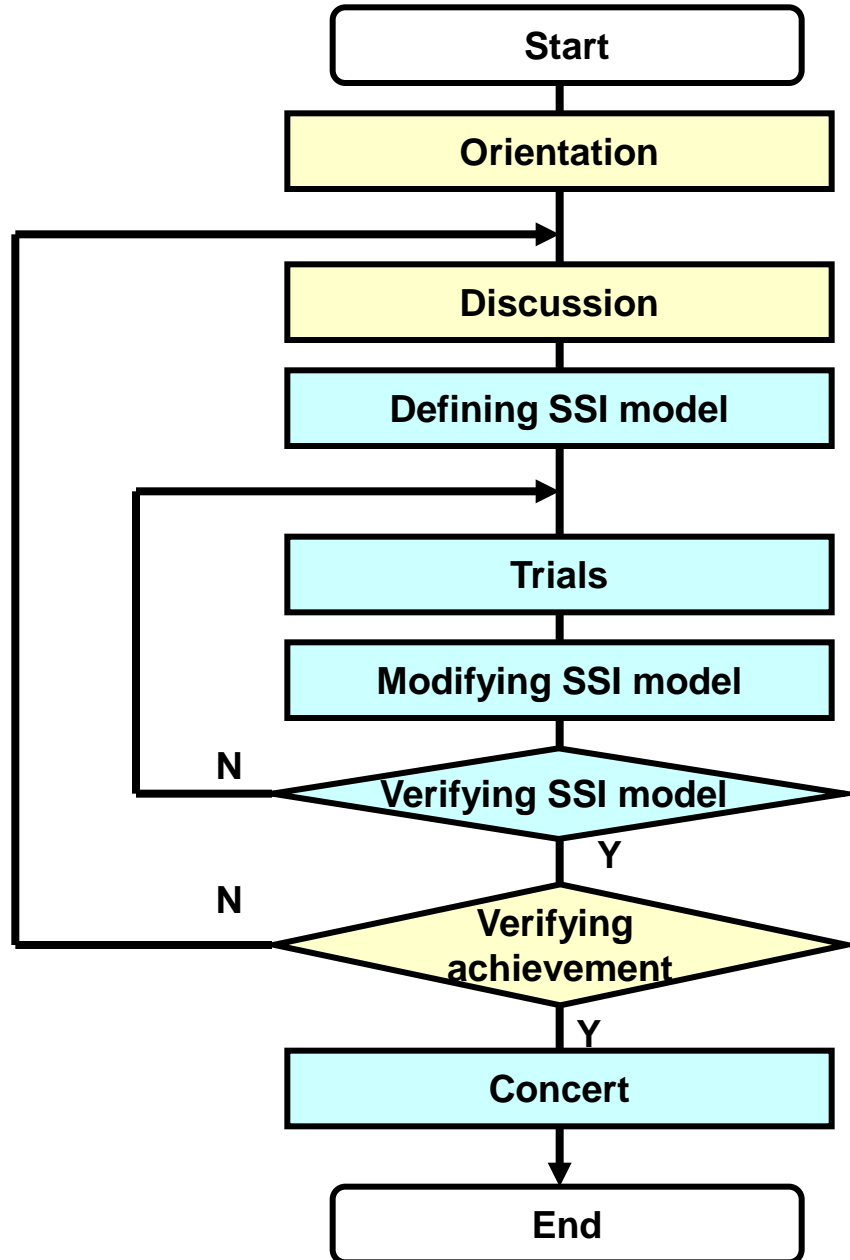
Observable Information /Latent Information for Each Players



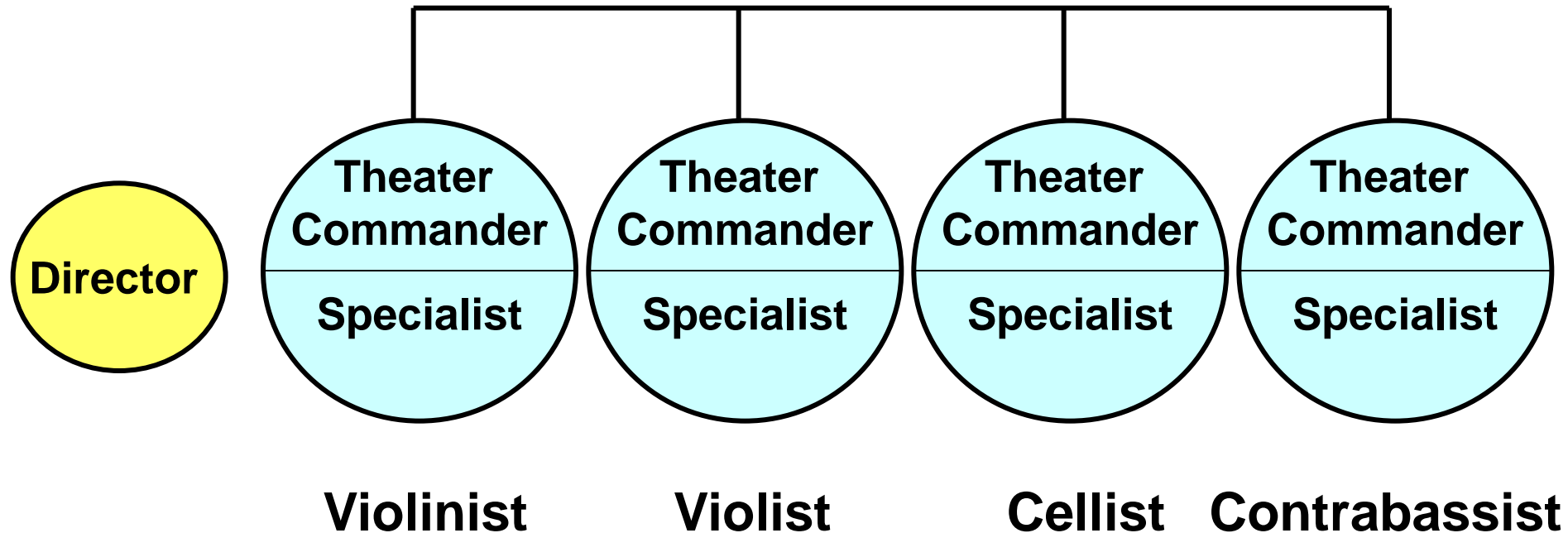
Feedback system for internal processing



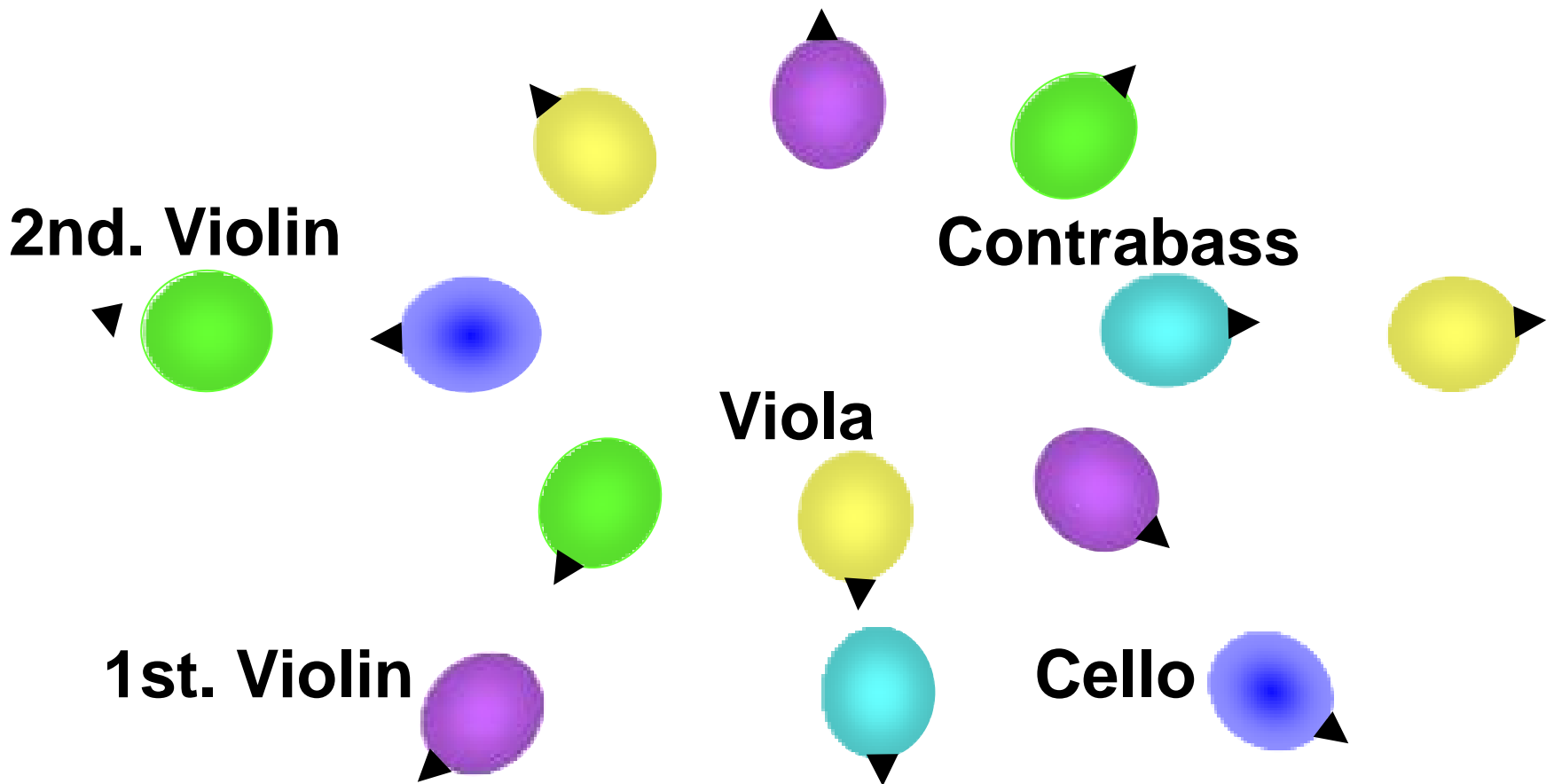
Process flow of Mori Method



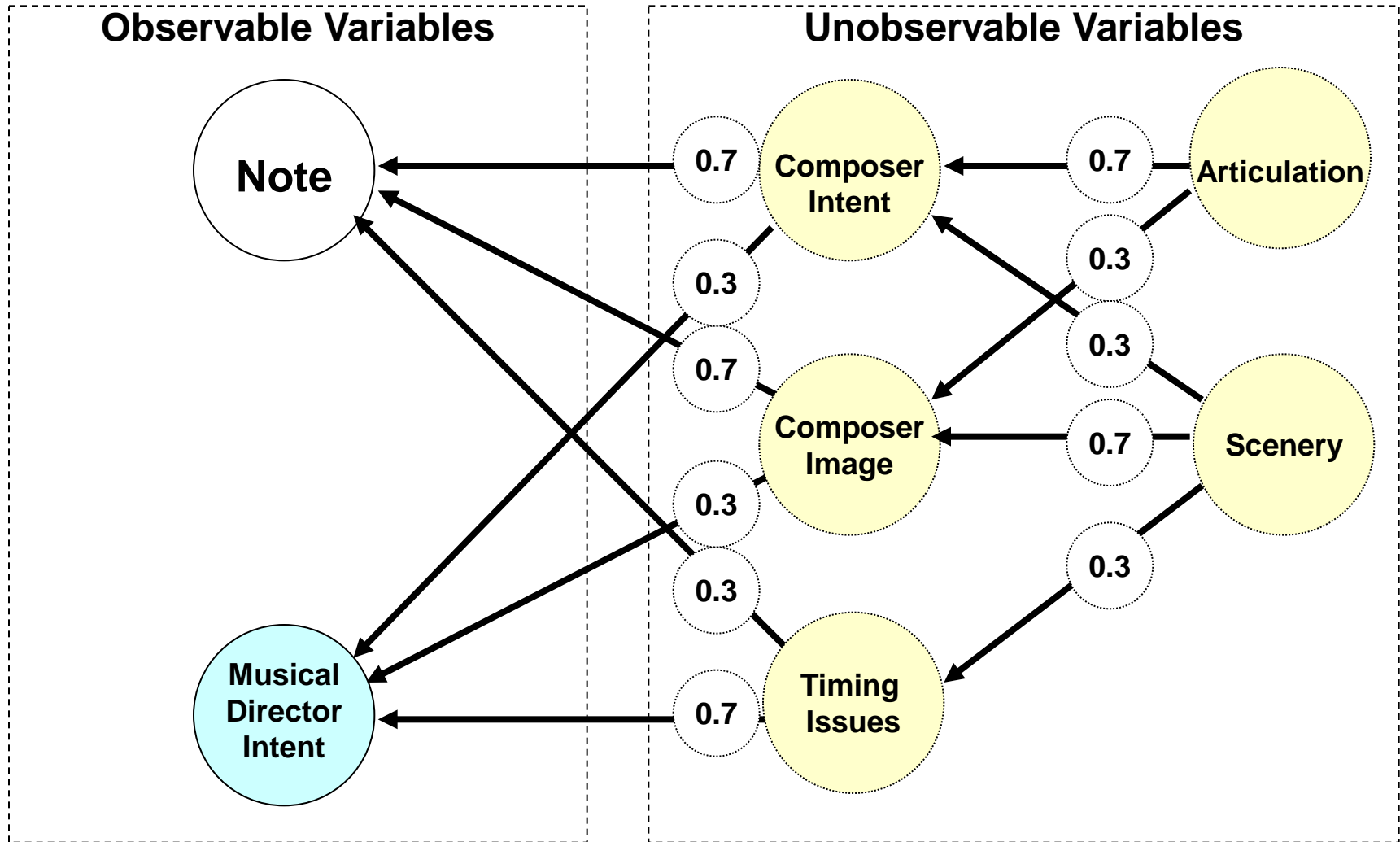
Verify our approach by String Orchestra without Conductor



Backward and Random Allocation of String Orchestra (without a conductor)



Hypothesized unobservable variables (SSI model)



Questionnaire form

Sheet 1:

Not deep

In performance



Deep

in performance

Sheet 2:

Not responsive



Well responsive

Sheet 3:

Not innovative



Well innovative

Sheet 4:

Not interactive
with audience



Well Interactive
with audience

Sheet 5:

Not alive



Alive

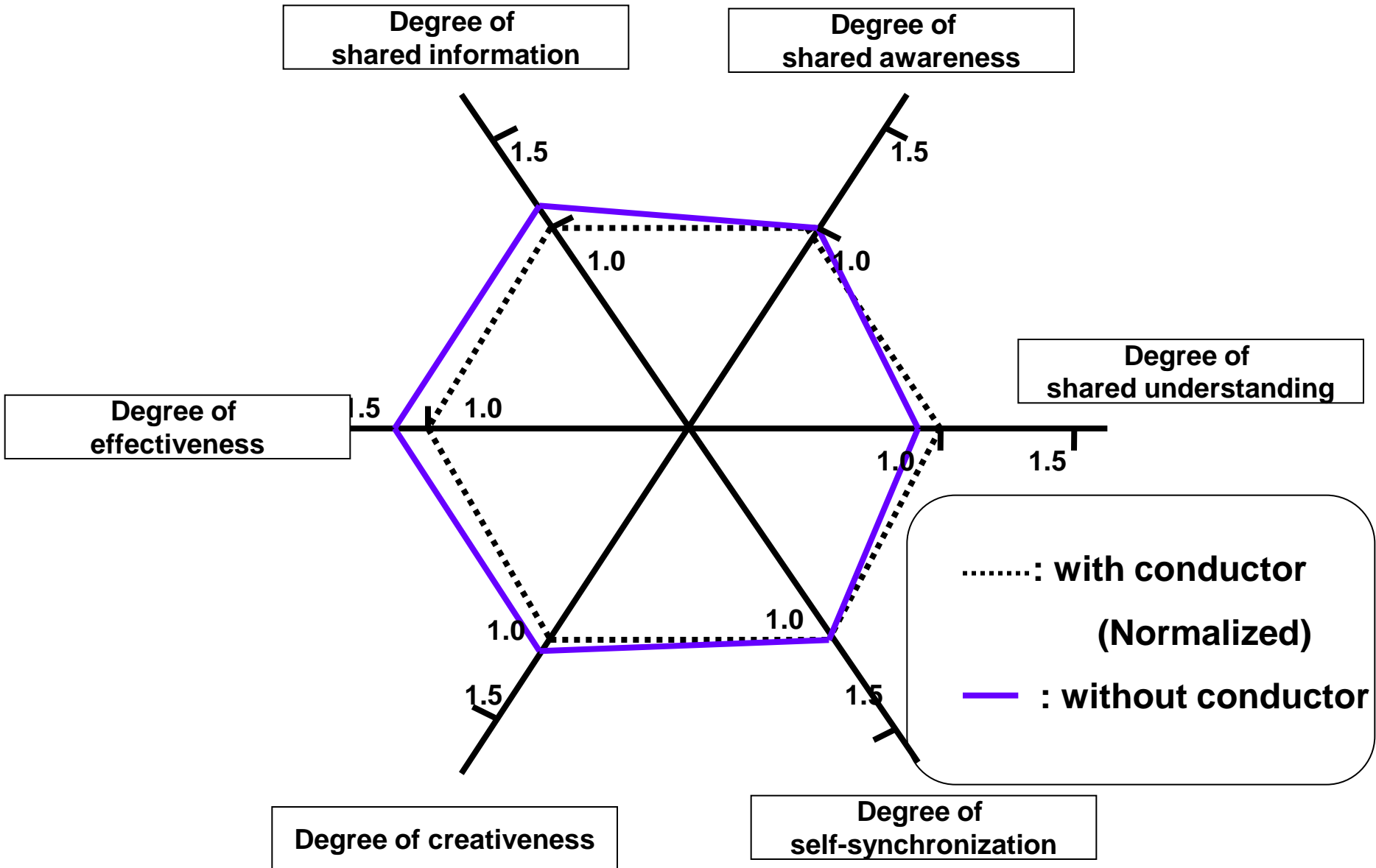
Sheet 6:

Not Spontaneous



Very spontaneous

Response for the questionnaire



Self-synchronization (time-based)

Normalized interval time

- Ensemble without Conductor

- Ensemble with Conductor
—————

: Normalized interval time

Z axis: Stringendo
X axis: Ritardand
& Felmata
Y axis: Pause

